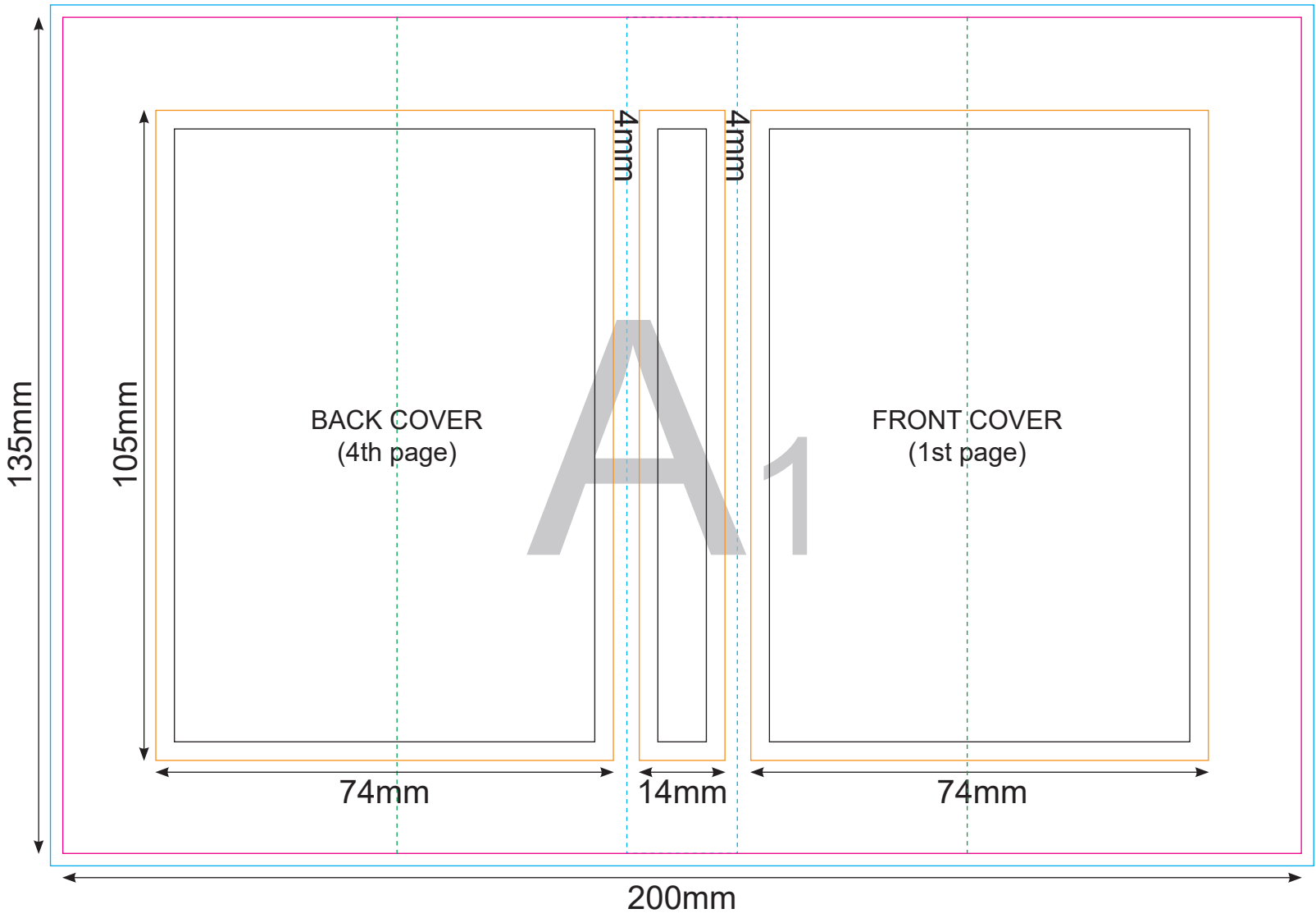
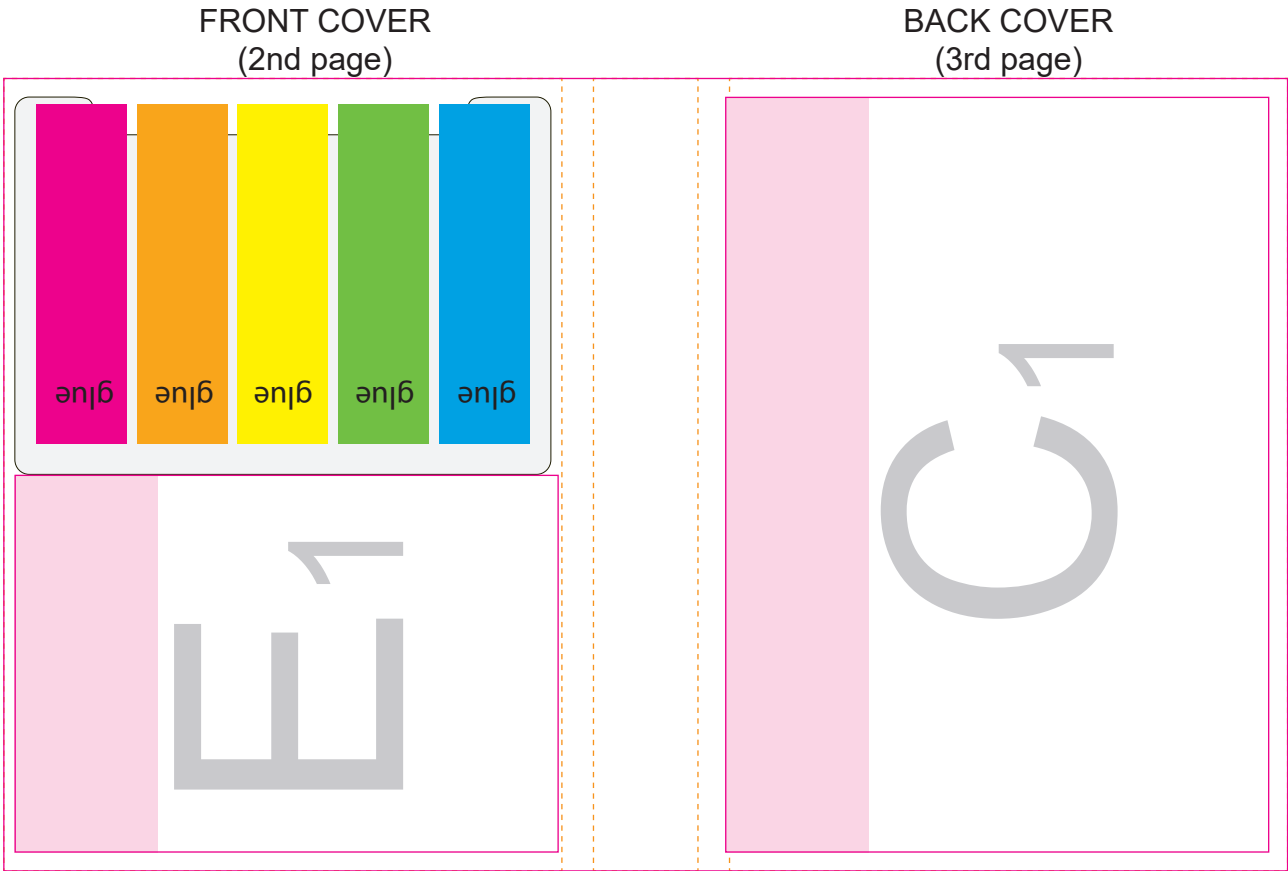


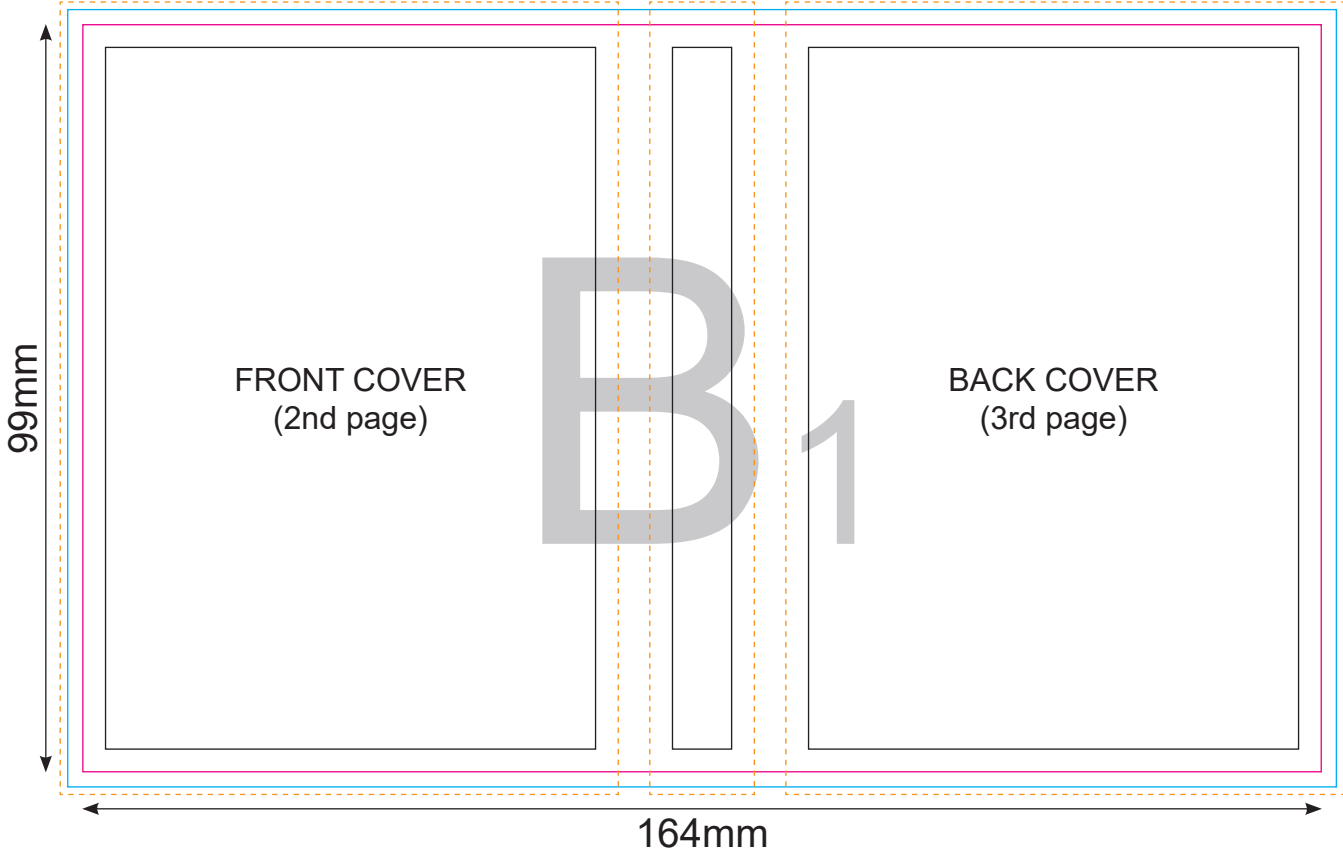
OUTER COVER



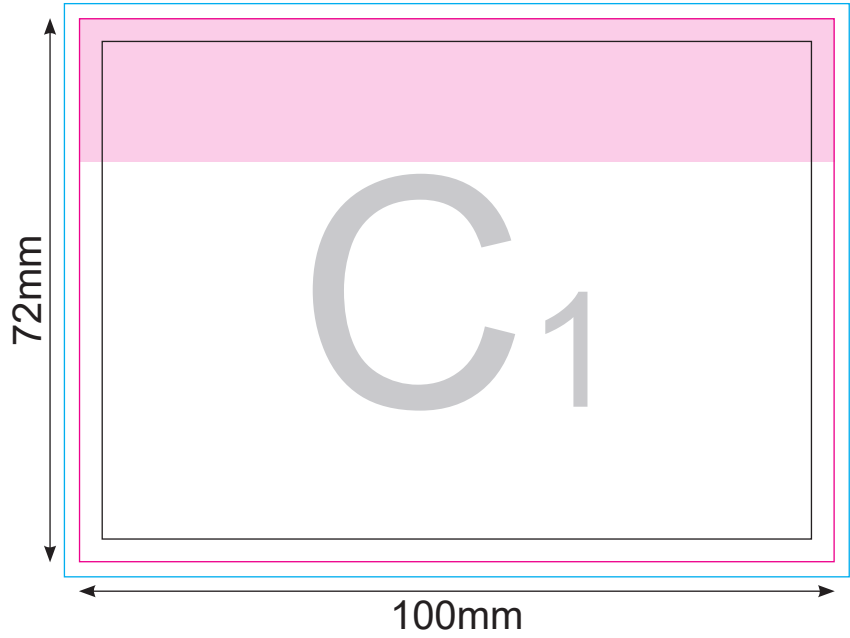
SKETCH OF COMPONENT PLACEMENT



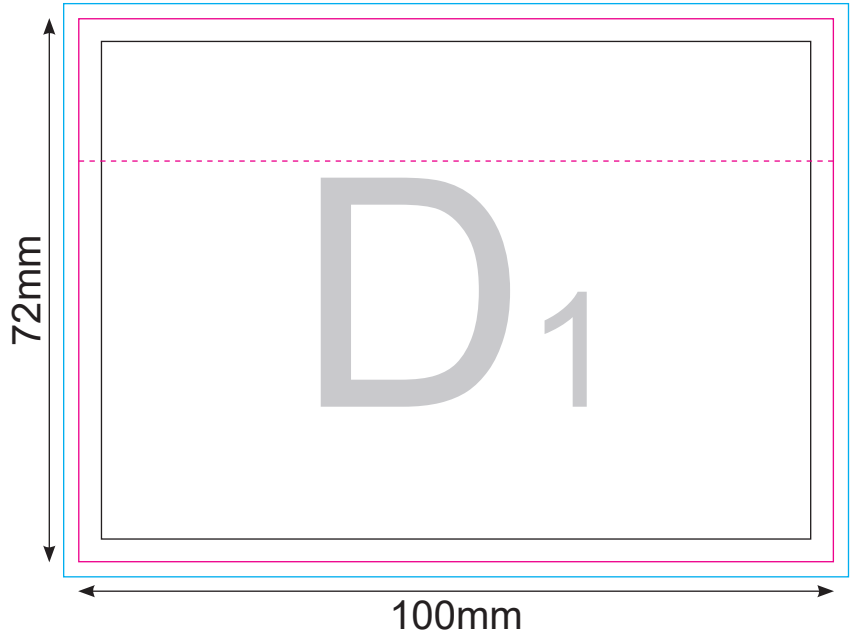
INNER COVER



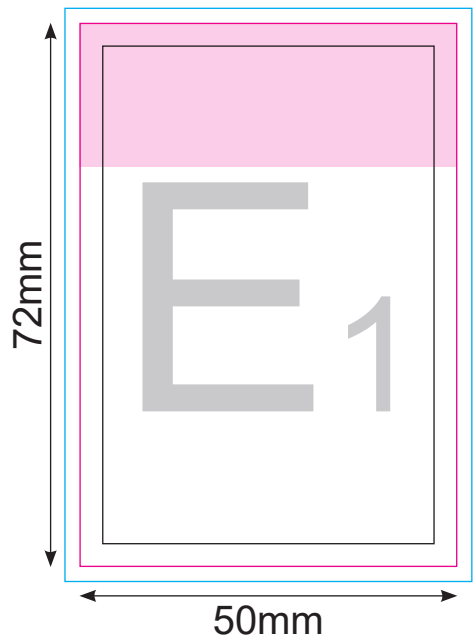
STICKY NOTES



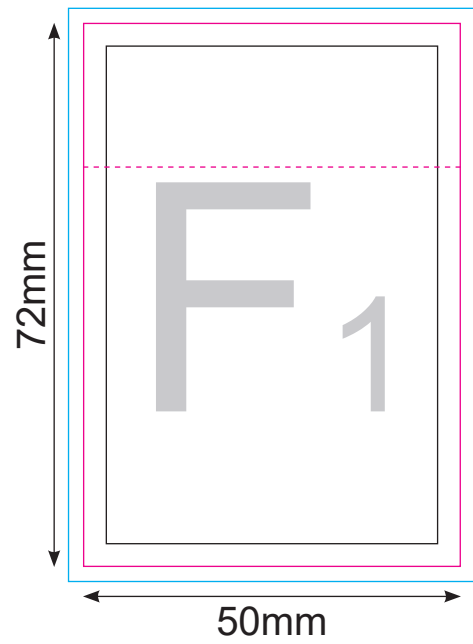
BOTTOM SHEET



STICKY NOTES



BOTTOM SHEET



Important:

Please use this page as preview/position guide.
Please do NOT place your materials on this page.
Please use next pages (2-7) for print ready files ONLY:

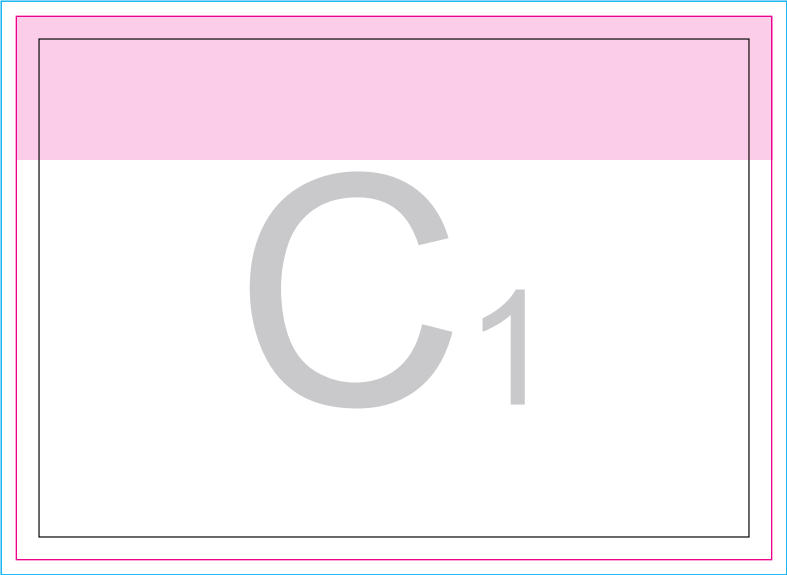
- page 2 - outer cover (A1)
- page 3 - inner cover (B1)
- page 4 - sticky notes (C1)
- page 5 - bottom sheet (D1)
- page 6 - sticky notes (E1)
- page 7 - bottom sheet (F1)

Key:

- Finished component size
- Bleed area. In case of bleed imprint, please extend it until blue line
- Safe print area. Keep all important text and graphics within this area
- Solid Board
- Edge of Solid Board
- Visual Spine Edge
- Axis of the Product
- Edge of Glue
- Glue

A1

B1



A diagram of a rectangular frame. The frame is composed of three nested rectangles. The outermost rectangle has a blue border. The middle rectangle has a pink border. The innermost rectangle has a black border. The top portion of the innermost rectangle is filled with a solid pink color, while the bottom portion is filled with a light gray color. Centered in the light gray area is the text "C₁".

C₁



The diagram consists of a large light gray rectangle. Inside this rectangle is a smaller white rectangle. A horizontal dashed magenta line runs across the white rectangle, positioned approximately one-third of the way from the top. The text "D1" is centered within the white rectangle, with the "D" being significantly larger than the "1". The entire diagram is enclosed within a blue border, and the white rectangle is also bordered by a magenta line.

D₁



E1



F1